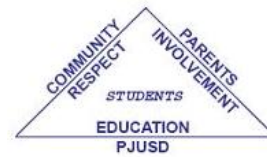


# Pierce Joint Unified School District

P.O. Box 239 • Arbuckle CA 95912 • (530) 476-2892 • Fax (530) 476-2289

Carol Geyer, Superintendent



17-18:

DATE POSTED: March 9, 2018

## PIERCE JOINT UNIFIED SCHOOL DISTRICT Citizens' Bond Oversight Committee for Measure B

Information Technology Building, Pierce High School 960 Wildwood Road, Arbuckle CA 95912  
Monday, March 12, 2018  
8:30 AM

1. **CALL TO ORDER** Time: \_\_\_\_\_

2. **ROLL CALL FOR**

	Present	Absent
Mike Doherty (Chair)	_____	_____
Barbara Scheimer	_____	_____
Chuck Wayman	_____	_____
Ariel Alonso	_____	_____
Joh Lauwerijssen	_____	_____
Ellen Voorhees	_____	_____
Edella Maldonado	_____	_____

3. **PLEDGE OF ALLEGIANCE**

4. **APPROVAL OF AGENDA**

Motion by \_\_\_\_\_ Second \_\_\_\_\_ Vote \_\_\_\_\_ Abstentions \_\_\_\_\_

5. **COMMUNITY INPUT/PRESENTATIONS/PUBLIC HEARING**

This is the time for members of the public to address the Citizens' Oversight Committee on any matters of general interest within the Committee's jurisdiction that are not on the agenda. In accordance with the provisions of the Ralph M. Brown Act, the Committee may refer to the Administration on any matters that are brought before them at this time, and the matter may be placed on future agenda. Please note that the Committee Members may ask limited questions for clarification on a subject not on the agenda, but may not discuss the subject or take any action. All remarks must be kept to a maximum of five minutes per person on a given topic (Government Code 54954.2)

6. **DISCUSSION ITEMS**

- Quarterly Progress Report – Executive Summary** – George Parker
- Attachment A - Draft Meeting Minutes for December 18, 2017**
- Attachment B – Program Design Schedule**
- Attachments C & D - Program Updates**
- Design Images - Handouts**

Board of Trustees: John Friel • Nadine High • George Green • Amy Charter • Abel Gomez  
President Vice-President Clerk Member Member

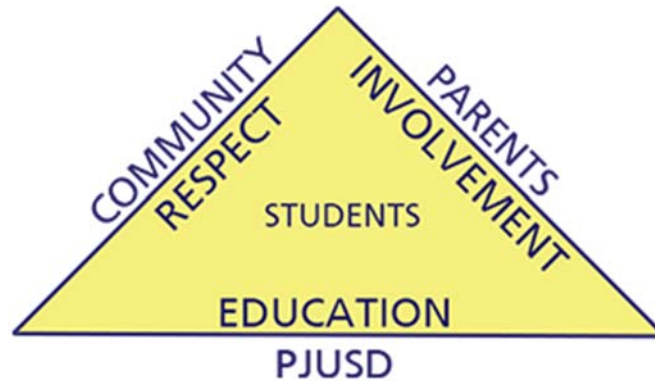
7. **FUTURE BUSINESS**

- a. Next COC Meeting Date

8. **ADJOURNEMENT**

Motion by\_\_\_\_\_ Second \_\_\_\_\_ Vote\_\_\_\_\_ Abstentions \_\_\_\_\_

# PIERCE JOINT UNIFIED SCHOOL DISTRICT



## Measure B Bond Quarterly Program Progress Report

Reporting Period:

December 1, 2017 through February 28, 2018

March 12, 2018

Prepared by: G. Parker – Capital Projects Manager

## TABLE OF CONTENTS

• Executive Summary	Pages 3-5
• Program Updates:	Pages 6-9
○ Pierce High School	
○ Lloyd Johnson Middle School	
○ Arbuckle Elementary School	
○ Grand Island Elementary School	
• Attachments:	
○ Previous Meeting Minutes	Attachment A
○ Program Design Schedule	Attachment B
○ Program Cost Summary	Attachment C
○ Project Listing Matrix	Attachment D
○ Design Images Handouts	Attachment E

The information contained herein is effective as of February 28, 2018, and only includes projects in “Active” status. All information is subject to change and/or revision by the Measure B Bond Program requirements.



---

## EXECUTIVE SUMMARY

---

### I. Executive Summary

Since the last progress update report to the Measure B Citizens' Oversight Committee held on November 30, 2017, the District Board of Trustees have defined project listings and budgets for the Measure B Bond Program. During this period, the District has authorized the sale of the remaining Bond Authorizations (Series B - \$8M) to be utilized to fulfill the revised project listing (Attachment C). The Measure B Bond Program has long anticipated matching funding support from the State's Proposition 51 that authorized \$7B for K-14 School Facilities. The District is working with school facilities consultants to establish updated eligibility values and prepare the necessary applications for State matching funds (estimated to be approximately \$3M Districtwide).

On March 14, 2018, the District intends to execute the sale of Series B Bonds (\$8M) and shortly thereafter, these funds will be in deposit at the County Treasury for use on District Bond projects. The full accounting of this sale will be provided at the next Citizens' Oversight Committee Meeting planned for June 2018. As part of the Proposition 39 voter initiative (*Education Code 15278*), the Citizens' Oversight Committee is established to provide accountability for the expenditures (*CBOC Bylaws, 3.2*) of bond proceeds that were approved by the voters for Measure B on November 8, 2016.

Work continues on Pierce High School's new multi-purpose building with the completion of the roofing, exterior lath and interior MEP Systems. Drywall and plastering activities are on-going with an expected completion of these activities by the end of March. During the month of February, a site tour was conducted with approximately 30 students from the High School and Junior High. These students were provided information on the project and took time to ask questions regarding the scope of the project and its amenities. Additional student involvement is planned in final space planning for furniture and activities planning. The project is ahead of schedule and is expected to be substantially complete by May 31, 2018.

Other projects for the Pierce High School Campus are moving forward with programming meetings with stakeholders & architects. These projects include; Girls locker room addition in Bldg. B, Main Gym Lobby and Weight Room with the modernization of the existing kitchen and cafeteria into a New Culinary Arts space. Meeting with key High School Staff continue around the Career Technical Program



## EXECUTIVE SUMMARY

to see if any of the District's vocational education (Agricultural Sciences) programs may benefit from a combined project submission. The District has executed an agreement with J.M. King Consultants that have extensive background in developing CTE Grant Application to assist in developing specific grant applications for Pierce High School.

The District has made progress with repairing three large roof areas at Pierce HS, Johnson MS and Arbuckle ES. Work is complete at Pierce HS & Johnson MS with work at Arbuckle ES expected to be completed by the end of April. These roof repairs are **NOT** Measure B Bond Funded but are related as part of the larger commitment to provide adequate facilities for student instruction.

Since the last report update, work for the Classroom replacement at Arbuckle Elementary continues with the finalization of the building floor plan (permanent construction) and interim relocation plan of the existing classrooms effected by this new work. The District's Architect has prepared a design timeline schedule (Attachment B) for this project that will allow for the relocation of these existing classrooms over the summer and the beginning of construction for the new building by September 2018. The District has also begun the search for responsible contractors through a Request for Qualification and Contractor Pre-Qualification effort. This process is a requirement under the State's Public Contract Code if State matching funds are being requested or used.

## II. Contracts and Procurement

During this period the District continued the process of finalizing contracts and agreements for various professional services as approved by the Board of Trustees.

### Agreements for Architect/Engineer Services:

- Architect's Modification is pending due to change of individuals within Sommers Architects. The modification is administrative only and identifies the new corporation name and their added officers.
- Professional Services Agreement (PSA)

As required pursuant to the CA Public Contract Code and District Policies, the District has, or may subsequently enter into, more than one agreement with individual firms for separate and related services. This is the result of specifically distinct solicitation and procurement efforts being undertaken by the District for each particular service or scope of work. This process has continued during this reporting period. The District has entered into professional services for those listed below during this reporting period and is



---

## EXECUTIVE SUMMARY

provided for information of expected Measure B Bond expenditures.

- *Clay Titus, Inc.* – Professional Services Agreement – Portable Building Moving Services – AES-01, Classroom Additions and Portable Relocations at Arbuckle Elementary School
- *McCumber's Glass, Inc.* – Professional Services Agreement – Window Replacement – PHS -06, Girls (North) Gym at Pierce High School

### Solicitations:

- Request for Qualifications, AES -01, Classroom Additions and Portable Relocations at Arbuckle Elementary School

### **III. Planning/Design/Pre-Construction:**

*District Stakeholder Group Committees* – Meetings continue each month to maintain active stakeholder participation for each project. Below are the listings of the various user planning groups and the associated projects:

Pierce HS – PHS - 03, Girls Locker Room Addition & Gym Lobby/Restroom Modernization  
PHS - 04, Modernization of Existing Kitchen and Cafeteria (CTE/Culinary Arts)  
PHS – 06, Weight Room Modernization  
PHS – 08/09, Farm Expansion (CTE) & Agricultural Education Center (CTE)

Arbuckle ES – AES - 01, Classroom Additions & Portable Building Relocations  
AES – 02, Kitchen Modernization

District Wide - DM – 01, Deferred Maintenance at All Sites  
DM – 02, Infrastructure Upgrades at AES & PHS  
Standards Development (Paint Color, Instructional Technology, etc.)

### **IV. Program Controls:**

*Cost Report* – Program Cost Summary Report (Attachment C) was created using the District Cost Report dated March 3, 2018, and is reflective of all bond costs expended to date through February 28, 2018.

*Scheduling* – The attached schedule (Project Listing Master & Design Summary Schedule) will be updated periodically, per Measure B Bond Program requirements.

*Project Listing* – The attached Project Listing Matrix (Attachment D) provides an at-a-glance look at the current status, by phase, for all projects.

*Budgets* - Total Project Budgets reflect the Board of Trustees approved Bond Program Budget Update on December 14, 2017.



## PROJECT UPDATES

### PIERCE HIGH SCHOOL – Multi-purpose Bldg.



*Exterior Lath*

#### Project Description:

The intent of this project is to provide a permanent expanded facilities for student dining and multi-use needs. The new 8,875 S.F. multi-purpose building began construction in August of 2017. Within this facility a 2,600 S.F. Commercial kitchen is being planned that will be able to prepare sufficient meals for the entire District. The building, situated in the center of campus, has deep architectural ties to the surrounding campus structures. The main multi-use room is 4,485 S.F. which can comfortably accommodate approximately 300 students (non-seated using 15 SF/person ratio).

As of this report:

#### Completed This Period

- \* Roofing System Complete
- \* Interior Trades (MEP) Complete
- \* Insulation & Drywall Started
- \* Exterior Lath & Plaster Started
- \* Interior Space Planning Mtgs.

#### Activity Planned for Next Period

- \* Interior Finishes Completed
- \* Kitchen Equipment Completed
- \* Building Commissioning/Punch List
- \* Beneficial Occupancy





### Project Description:

Architectural floor plan of the second floor. The plan includes the following rooms and features:

- (N) CLASSROOM [28]**: 987 SF. Includes a dashed line for a **NEW BEAM** and an annotation **ALL NEW WINDOWS** pointing to the top wall.
- (N) BOYS RR [29]**: Restroom.
- (N) GIRLS RR [30]**: Restroom.
- VESTIBULE [31]**: Entrance area.
- (G) GYMNASIUM [32]**: 2284 SF. Central large open space.
- (N) WEIGHT ROOM [33]**: 1178 SF. Includes a dashed line for a **NEW BEAM** and an annotation **ALL NEW WINDOWS** pointing to the top wall.
- PE STORAGE [34]**: 145 SF.
- NEW LANDING AND RAMP DOWN (-4)**: Located between the weight room and the storefront glass door.
- NEW STOREFRONT GLASS DOOR**: Two locations indicated by arrows at the bottom of the plan.
- ALL NEW WINDOWS**: Annotation pointing to the bottom wall of the right wing.

NOT TO SCALE

As of this report:

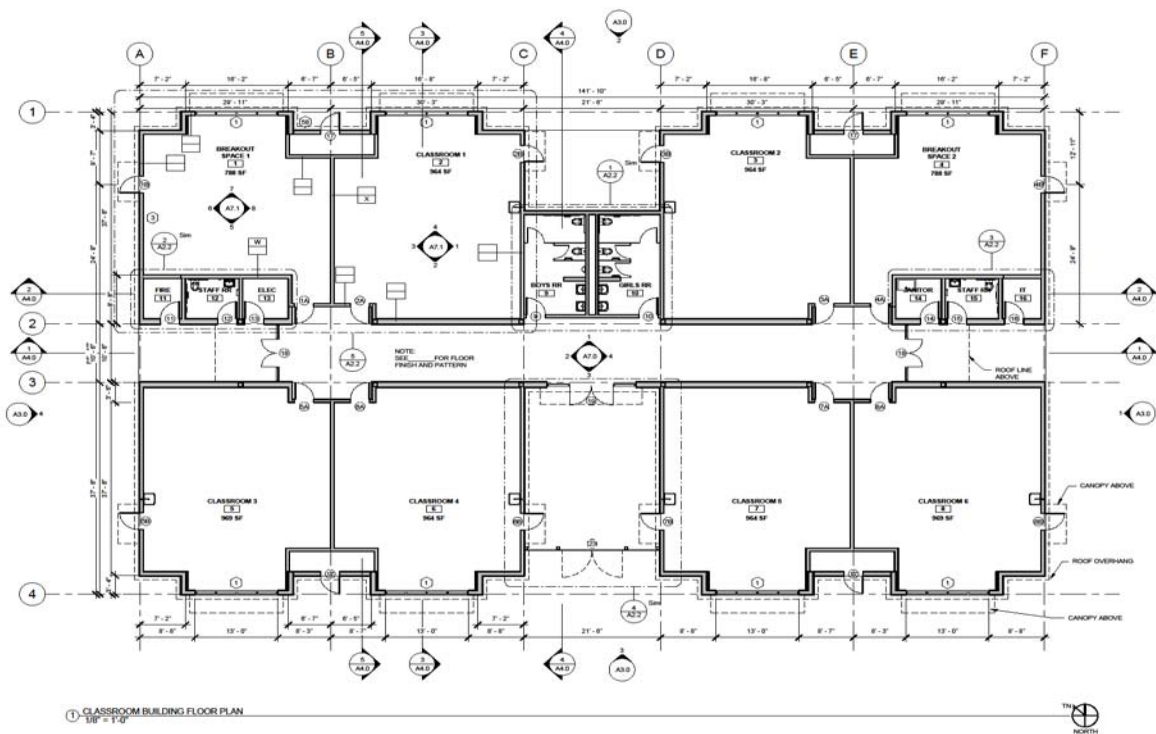
- \* Hazardous Material Survey Completed
- \* Program Needs/Design Completed
- \* New Window Contract Issued
- \* Procurement Bidding Being Prepared
- \* New Bleachers Being Installed

- \* Demolition of Space Started
- \* Design Drawings to DSA
- \* Modifications to Entrances Complete
- \* New Windows Installed



## PROJECT UPDATES

## ARBuckle Elementary School – New Classroom Additions &amp; Portable Relocations



### Architect's Conceptual Building Elevation

### Project Description:

The intent of this project is to replace 8 existing portable classroom buildings with one single building with 8 classrooms. This project will provide permanent instructional facilities for students and create a connected environment for these new spaces. The proposed 9,500 S.F new facility will be located along the East edge of campus and be self-contained with its own restroom facilities.

As of this report:

## Completed This Period

- \* Program Planning for Interior Spaces
- \* Underground Utility Located
- \* 50% Construction Documents
- \* Field Trip to Corning USD (Gen 7 Bldgs.)
- \* Final Site Plan Planning

## Activity Planned for Next Period

- \* Construction Documents Completed
- \* Increment 1, Site Work – DSA Submittal
- \* Increment 2, Bldg. Plans – DSA Submittal



---

**PROJECT UPDATES**

**ARBUCKLE ELEMENTARY SCHOOL -**

AES 02 - Kitchen Remodel/Modernization

Project Schematic Design Development Completed, Design Development Continuing

AES 03 - Joint Use w/County Library

Project Development on hold

**GRAND ISLAND ELEMENTARY SCHOOL -**

GIES 01 - Roof Replacement Project

Project Schematic Design Development not yet begun

**PIERCE HIGH SCHOOL –**

PHS 03 - Second Locker Room Addition (Bldg. B)

Schematic Design Development Completed, Design Development Continuing

PHS 04 – Modernization of Existing Cafeteria (Bldg. A)

Schematic Design Development Completed, Design Development Continuing

PHS 05 – Replacement of Existing Portable Classrooms

Project Development on hold

PHS 06 – Weight Room Modernization

Schematic Design Development Completed, Design Development Continuing

PHS 07 – Career Center Addition at Small Gym

Project Development on hold

PHS 08 – Farm Expansion

Program Needs Assessment On-going

PHS 09 – Agricultural Education Center

Program Needs Assessment On-going

PHS 10 – Modernization of Historic Main Bldg. (Bldg. A)

Project Development on hold

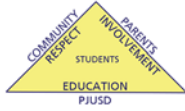


---

**ATTACHMENTS**

- Attachments:
  - Previous Meeting Minutes Attachment A
  - Design Schedule Overview Attachment B
  - Program Cost Summary Attachment C
  - Project Listing Matrix Attachment D
  - Design Images Handouts Attachment E





## MEASURE B BOND UPDATE

### **Pierce Joint Unified School District Receives Rating Upgrade from Standard & Poor's and Successfully Sells General Obligation Bonds**

February 27, 2018 –The Pierce Joint Unified School District has received an upgrade from Standard & Poor's (S&P's) on its general obligation bonds to "AA-," based on the District's strong financial profile, stable enrollment, and solid tax base.

The District received voter authorization to issue \$15 million in general obligation bonds in November 2016. The first series of bonds under the authorization (Series A) was issued in May 2017. The District was in the market with the second series of bonds under the authorization (Series B) on February 27<sup>th</sup>.

The Series B bonds received good interest from investors and the District was able to lock in a true interest cost (TIC) for the bonds of 3.90%. The repayment ratio on the Series B bonds was 1.91 to 1, significantly less than the statutory maximum of 4.00 to 1. Despite the increased volatility and uncertainty in the current market, the District was able to lock in a lower borrowing rate for the Series B bonds than for the Series A bonds last year.

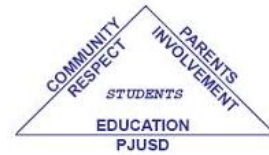
The Series B bonds will be issued on March 14<sup>th</sup>. With the proceeds of these bonds, the District looks forward to continuing with the facilities improvements to our schools.

# ***Pierce Joint Unified School District***

P.O. Box 239 • Arbuckle CA 95912 • (530) 476-2892 • Fax (530) 476-2289

Carol Geyer, Superintendent

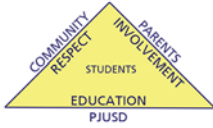
## ATTACHMENT A



### Citizens' Bond Oversight Committee for Measure B Meeting Minutes December 18, 2017

1. Meeting was called to order at 8:31 by chair, Mike Doherty
2. Roll call was taken. All members were present with the exception of Joh Lauwerijssen who arrived at 8:40 a.m. Guests: Carol Geyer, Daena Meras & George Parker
3. Pledge of Allegiance took place
4. A motion to approve the agenda was made by Edella Maldonado and seconded by Chuck Wayman. Voting Aye: Mike Doherty, Barbara Scheimer, Chuck Wayman, Ariel Alonso, Ellen Voorhees and Edella Maldonado. Voting No: None. Absent: Joh Lauwerijssen
5. Community Input/Public Hearing: No one from the public spoke. Carol Geyer introduced George Parker, the new Capital Projects Manager for the District.
6.
  - a. Quarterly Progress Report - George Parker presented the Quarterly Progress Report. Each member had a copy of the document that George reviewed orally with the group. This report contained an executive summary, information on contractors and procurement, planning/design/pre-construction, program controls, and project updates. Committee members asked questions as they arose regarding the information.
  - b. Minutes from September 18, 2017 Citizens' Bond Oversight Committee Meeting - A motion to approve the minutes was made by Ariel Alonso and seconded by Ellen Voorhees. Voting Aye: Mike Doherty, Barbara Scheimer, Chuck Wayman, Ariel Alonso, Ellen Voorhees and Edella Maldonado and Joh Lauwerijssen. Voting No: None. Absent: None
  - c. 2017 Bond Audit Report – Daena Meras distributed a slide presentation to the committee members that the auditor had previously presents. She went through each slide with the committee explaining as she went along. She referenced to the group that they had a copy of the entire audit report in their meeting packet. A question was asked by a member about the \$559,431 Issue Premium. Daena explained that this money is set-aside for bond obligations. She stated that the money is in a special account at the county. There are no indirect fees charged by the county on this money.
  - d. Program Updates, Attachments C & D – George Parker went through the cost summary of each of the proposed projects from the spreadsheet he presented. This sheet included the current project budget and state share of projected funds as well as notes on certain projects. Attachment D was reviewed. This sheet had each of the projects listed with a matrix showing where the phase of that project is currently.
7. Future Business – Next meeting is scheduled for March 12, 2018 at 8:30 a.m. at the IT Building. A field trip to look at current projects will follow this meeting.
8. Adjournment, 9: 14 a.m. – A motion to adjourn the meeting was made by Ellen Voorhees and seconded by Edella Maldonado. Voting Aye: Mike Doherty, Barbara Scheimer, Chuck Wayman, Ariel Alonso, Ellen Voorhees and Edella Maldonado and Joh Lauwerijssen. Voting No: None. Absent: None

**Board of Trustees:** John Friel • Nadine High • George Green • Amy Charter • Abel Gomez  
*President Vice-President Clerk Member Member*



# Measure B Bond

March 12, 2018

## Design Schedule Overview

### **AES Classroom Addition**

Increment 1 - Relocation of (E) Mods (Construction May 18 - August 18)

1. Develop Site Plan for OTC Review at DSA ***Feb 18 - March 18***
2. OTC Approval at DSA ***Early March 18***
3. Bid ***March 18 - April 18***
4. Award ***May 18***
5. Construction ***May 18 - August 18***

Increment 2 - Classroom Building

1. Finish CD's ***Feb 18 - April 18***
2. Submit to DSA ***First of May 18 (DSA May, June, July, August)***
3. Bid ***August 18***
4. Award ***September 18***
5. Construction ***September 18 - August 19***

### **PHS Kitchen Modernization and Ag Education Center**

1. Develop CTE Pathway and Grant ***Starting Feb 18***
2. This project is only feasible with an approved CTE Grant

### **PHS Locker Room**

1. Finish CD's ***April 18 - July 18***
2. Submit to DSA ***First of July 18 (DSA July, August, September, October 18)***
3. Bid ***November 18***
4. Award ***December 18***
5. Construction ***January 19 - July 19 (Coach asked to not take locker room down until after basketball tourney in December 18)***

### **PHS Weight Room**

1. Additional design review underway to verify structural elements of existing bldg.
2. Design to commence ***February 18*** incrementally to minimize DSA impacts.
3. Note: The new hardship threshold is \$160K. We need to be under that or the whole building is going to be an issue.

PIERCE JOINT UNIFIED SCHOOL DISTRICT  
MEASURE B BOND PROGRAM  
COST SUMMARY

PROJECT NO.	PROJECT	Current Project Budget	State Share (Unfunded)	Total Estimated Construction Costs	Obligations/ Commitments to Date	Paid to Date	Open Encumbrance	% Obligated	% Complete	Notes
	<b>STARTING BOND VALUE (Series A - \$7,000,000)</b>	<b>\$ 7,559,430.85</b>			<b>\$ 559,430.85</b>					Excess Funds Moved to Debt Service Account (Fund 51)
Issuance	Issuance, Underwriting and Insurance Costs				\$ 228,812.83	\$ 228,812.83		100%	100%	
AES-01	Classroom Addition & Portable Bldg. Relocation	\$ 5,116,900.00	\$ 1,208,000.00			\$ 118,874.50		0.05%	1%	
AES-02	AES Kitchen Modernization	\$ -								
<del>AES-03</del>	<del>Joint Use Project w/County Library</del>	<del>\$ -</del>								
<del>LMS-01</del>	<del>Classroom Reconfiguration (Removal of Tech Areas)</del>	<del>\$ -</del>								
PHS-01	New Multi-Purpose Bldg.	\$ 4,800,000.00	\$ 1,149,000.00	\$ 4,300,000.00	\$ 4,034,187.00	\$ 1,778,254.00	\$ 2,661,745.00	80%	45%	Incl. Const. & Soft Costs
<del>PHS-02</del>	<del>Modernize Snack Bar Bldg. - Football Field</del>	<del>\$ -</del>								
PHS-03	Construct Second Locker Room (Girls & Boys)	\$ 2,221,200.00	\$ 850,000.00		\$ 100,000.00	\$ 28,562.00				*(1,920 SF New Const)
PHS-04	Modernize Existing Cafeteria into (N) Culinary Classroom	\$ -	\$ -							Possible State CTE Funding
<del>PHS-05</del>	<del>Portable Classroom Replacement w/New CR Bldg.</del>	<del>\$ -</del>								
PHS-06	Construct New Weight Room	\$ 388,000.00	\$ 155,200.00							
PHS-07	Constr. Career Center at Small Gym	\$ -								
PHS-08	Farm Expansion - Upgrades to Existing Barn	\$ -								
PHS-09	Agricultural Education Center	\$ -								Possible State CTE Funding
PHS-10	Modernization of Historic Main Bldg.	\$ -								
PHS-11	Improvements to Atheltic Complex	\$ 500,000.00								
DM-01	Deferred Maintenance Project - All Sites	\$ -								
DM-02	Infrastructure Upgrades at AES & PHS	\$ -								
<del>PN17-04</del>	<del>Roof Replacement at (3) Sites</del>	<del>\$ -</del>		<del>\$ 559,237.00</del>						Fund 41-Capital Outlay-\$576K Budget
PC	Program Contingency	\$ 1,473,900.00								
	<b>Totals</b>	<b>\$ 14,500,000.00</b>	<b>\$ 3,362,200.00</b>	<b>\$ 4,300,000.00</b>	<b>\$ 4,362,999.83</b>	<b>\$ 2,154,503.33</b>	<b>\$ 2,661,745.00</b>			

Notes:  
Bond Sale yielded excess revenue of \$559,430.85 and placed into Debt Service Account.  
Series B Bond Sales expected by March 30, 2018  
Total expenditures through 2/30/2018 total \$2,154,504  
Estimated State Matching Funds - Not assumed to be Released Soon  
Locker Rm Project Still Undergoing Review for Size & Budget  
Many project placed on hold until the State Matching Funds can be realized



PIERCE JOINT UNIFIED SCHOOL DISTRICT  
MEASURE B BOND PROGRAM  
PROJECT MATRIX

March 12, 2018

ATTACHMENT D

PROJECT		Initial Planning Pre-Design	A/E Selection	Programming	Schematic Design	Design Development	Construction Documents	DSA	Bid & Award	Construction	Close-out	REMARKS
AES-01	Classroom Addition & Portable BLdg. Relocation						◆	3/1/2018, 5/2018				Inc. 1 - Site Utilites, Relocate Portables Inc. 2 - New Bldg.
AES-02	Kitchen Modernization	◆										Project Pending Programming
AES-03	<del>Joint Use Project w/County Library</del>											Project on Hold due to Budget Constraints
<del>LIMS-01</del>	<del>Classroom Reconfiguration (Removal of Tech Areas)</del>										◆	<b>Non Measure B Bond Project</b>
PHS-01	New Multi-Purpose Bldg.									◆		Expect Completion by June 2018
PHS-02	<del>Modernize Snack Bar Bldg. – Football Field</del>										◆	<b>Non Measure B Bond Project</b>
PHS-03	Construct Second Locker Room (Girls)				◆			Jul-18				
PHS-04	Modernize Existing Cafeteria into (N) Culinary Classroom		◆									CTE Grant Application Prep.
PHS-05	<del>Portable Classroom Replacement w/New CR Bldg.</del>											Project on Hold due to Budget Constraints
PHS-06	Construct New Weight Room					◆		Apr-18				
PHS-07	<del>Constr. Career Center at Small Gym</del>	◆										Project on Hold due to Budget Constraints
PHS-08	Farm Expansion - Upgrades to Existing Barn	◆										
PHS-09	Agricultural Education Center	◆										CTE Grant Application Prep.
PHS-10	Modernization of Historic Main Bldg.											Project on Hold due to Budget Constraints
PHS-11	Improvements to Atheltic Complex											Project on Hold due to Budget Constraints
DM-01	Deferred Maintenance Project - All Sites	◆										
DM-02	Infrastructure Upgrades at AES & PHS	◆										
<del>PN17-04</del>	<del>Roof Replacement at (3) Sites</del>									◆		<b>Non Measure B Bond Project</b>

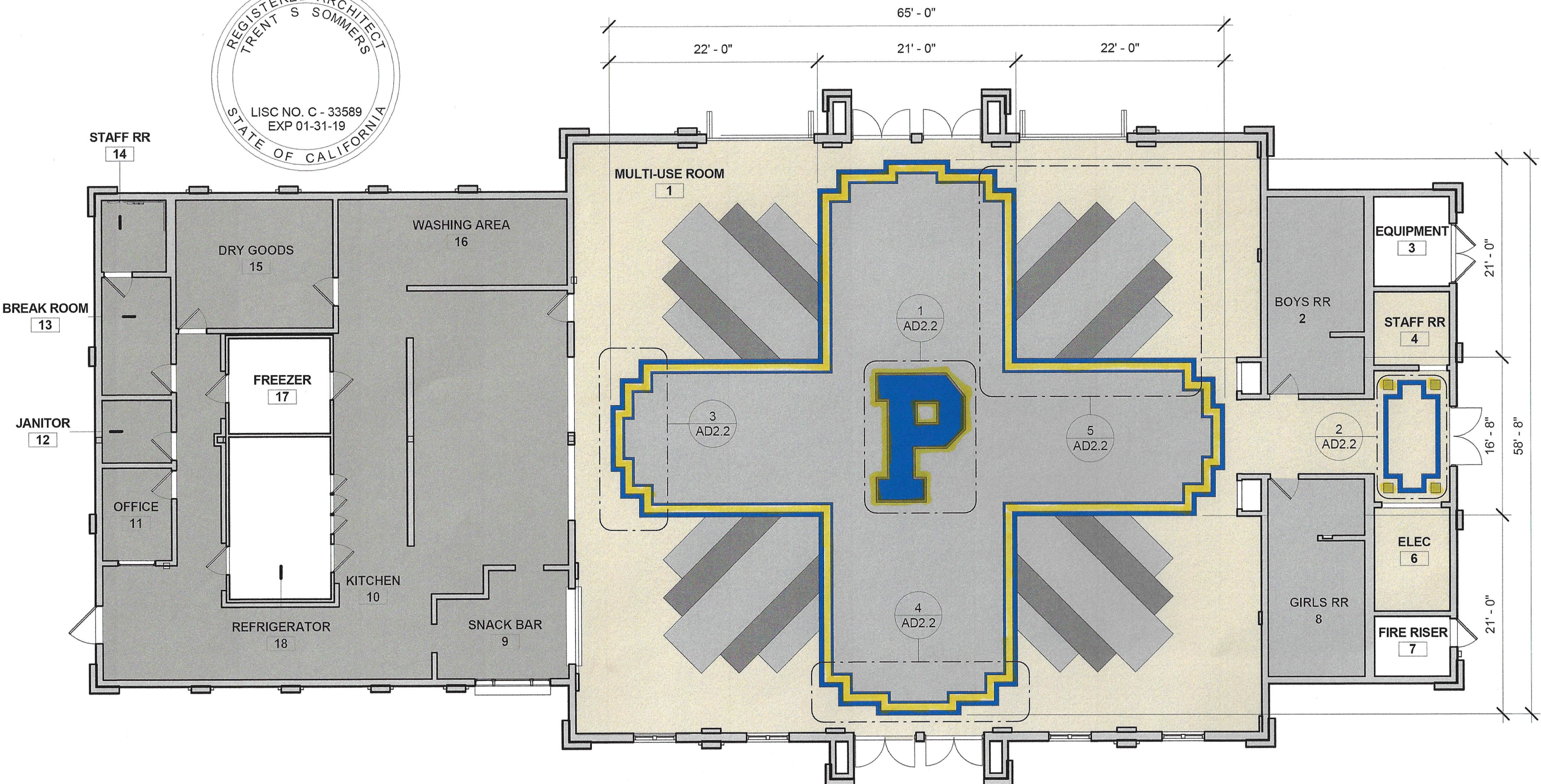
Notes:

See specific timelines on Desgin Schedule Overview Document.

# ATTACHMENT E

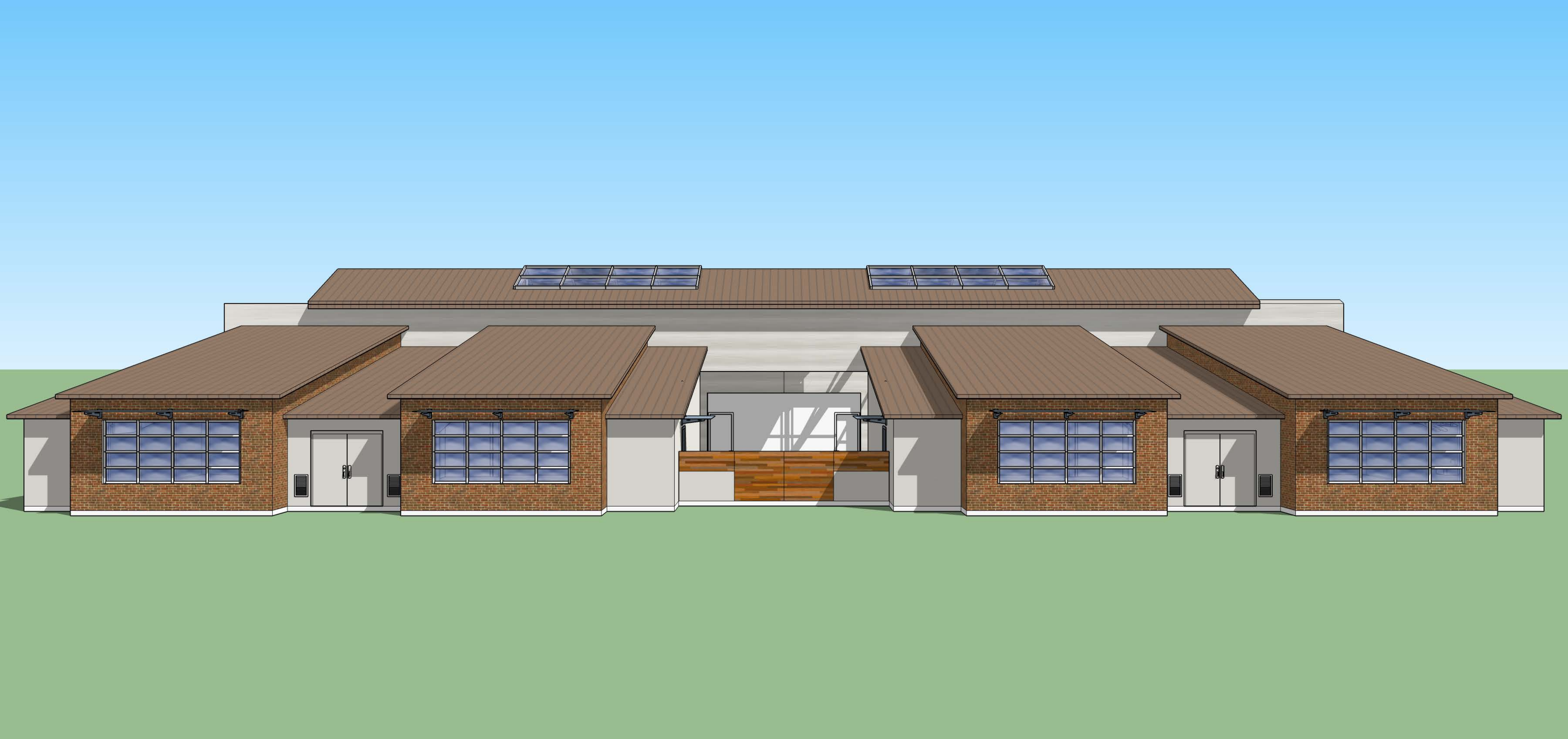






1 FLOOR PATTERN AND LAYOUT  
1" = 10'-0"

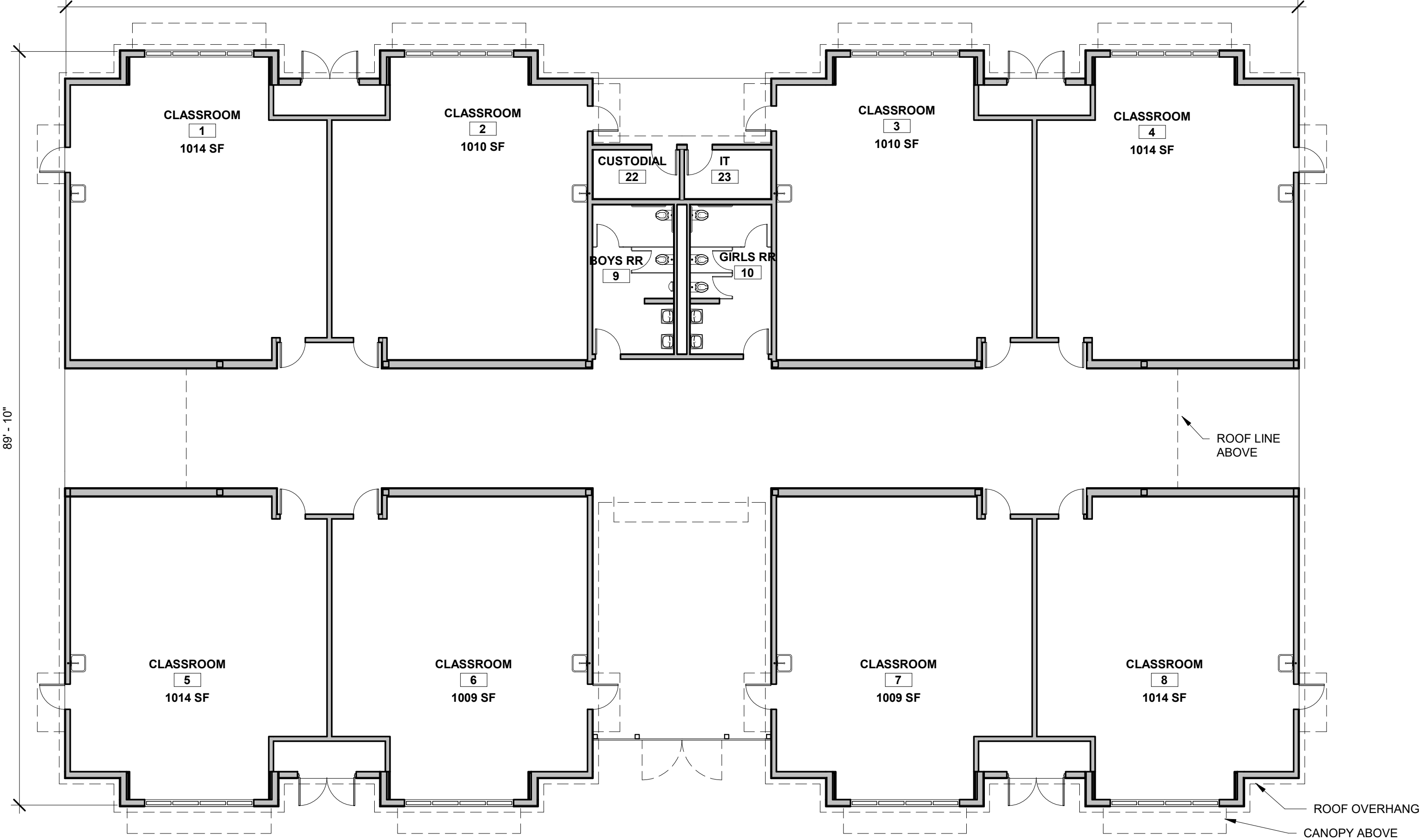








146' - 10"



FLOOR PLAN

ARBUCKLE ELEMENTARY SCHOOL

3/32" = 1'-0"

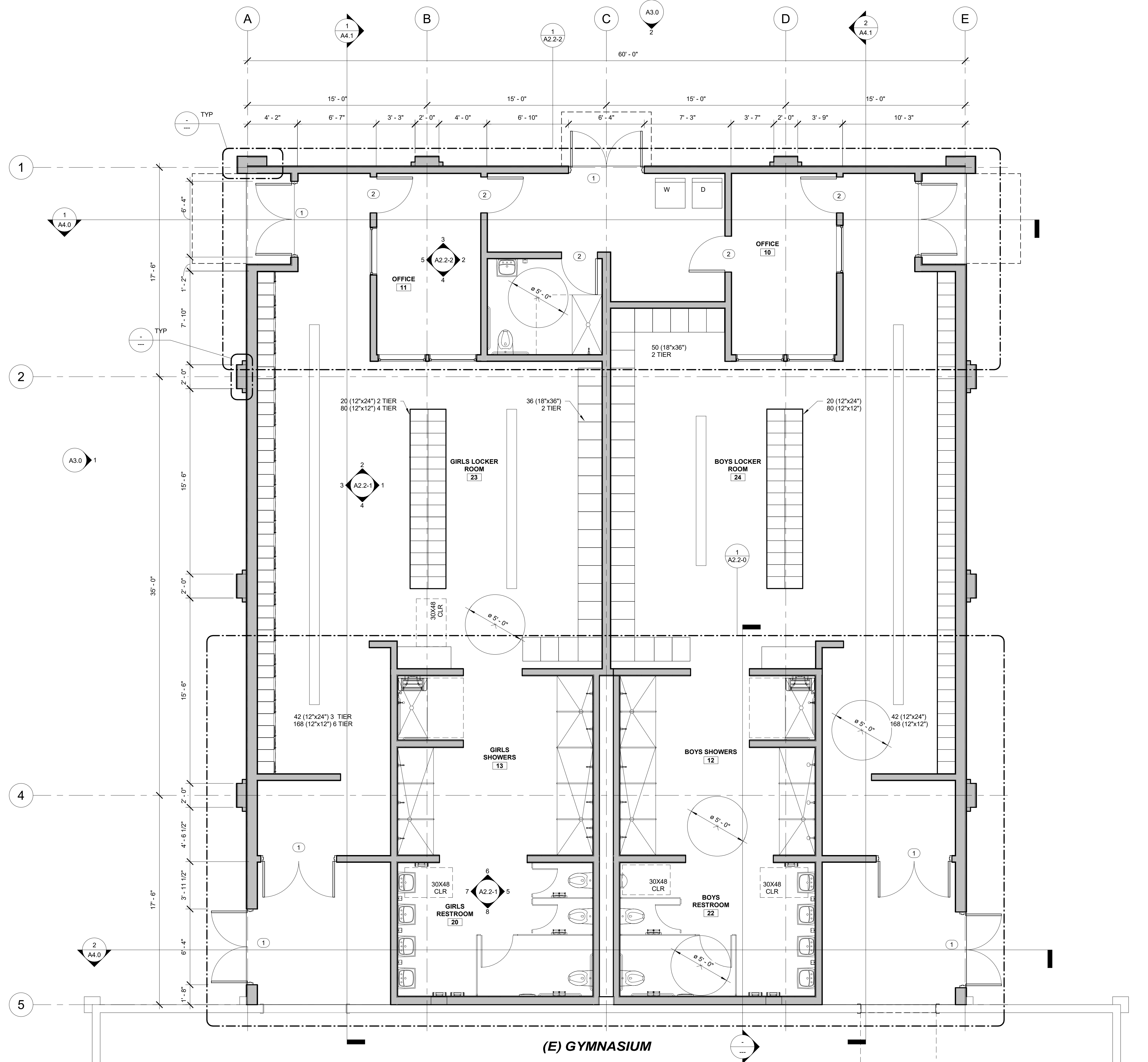
DSA APP: 0\_ -

**[SA] SOMMERS**  
ARCHITECTURE

TRENT S. SOMMERS  
ARCHITECT AND LEED AP

530 : 781 : 3112  
tsommers@sommersarch.com  
3701 Business Drive Suite 200  
Sacramento, CA 95820

DD 02



1 LOCKER ROOM NEW FLOOR PLAN  
1/4" = 1'-0"

# PROPOSED NEW LOCKER ROOM

REVISIONS:	



**[SA] SOMMERS**  
ARCHITECTURE

**TRENT S. SOMMERS**  
ARCHITECT AND LEED AP  
530 : 781 : 3112  
TSommers@sommersarch.com  
2194 Carmel Valley Rd  
Del Mar, CA 92014  
www.sommersarch.com

## NEW LOCKER ROOM FLOOR PLAN

**PIERCE HIGH SCHOOL  
LOCKER ROOM ADDITION**  
960 WILDWOOD ROAD, ARBUCKLE,  
CA 95912

IDENTIFICATION STAMP DIVISION OF THE STATE ARCHITECT	
DSA APP: 0_ _ _ _ _	
FILE NO. _ _ _ _ _	
AC	FLS
DATE 04 - 20 - 2017	

PROJECT NO.	Project Number
DATE	Issue Date
DRAWN BY	Author
CHECKED BY	Checker

A2.1.1

SCALE SEE DRAWING TITLE



WEIGHT ROOM

PIERCE HIGH SCHOOL

3/32" = 1'-0"

DSA APP: 0\_ - \_ \_ \_ \_ \_

**[SA] SOMMERS**  
ARCHITECTURE

TRENT S. SOMMERS  
ARCHITECT AND LEED AP

530 : 781 : 3112  
tsommers@sommersarch.com  
2194 Carmel Valley Rd  
Del Mar, CA 92014

DD1